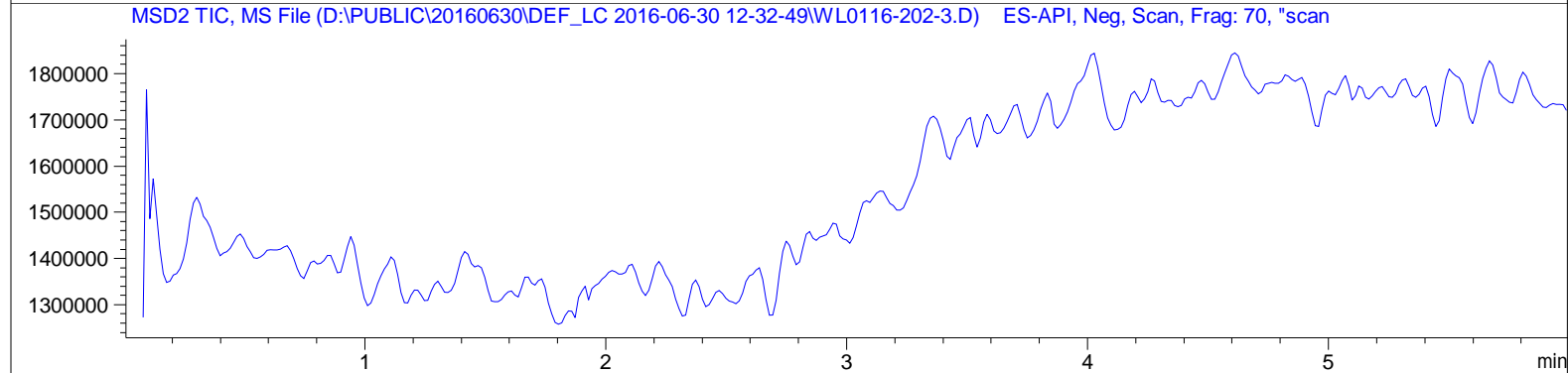
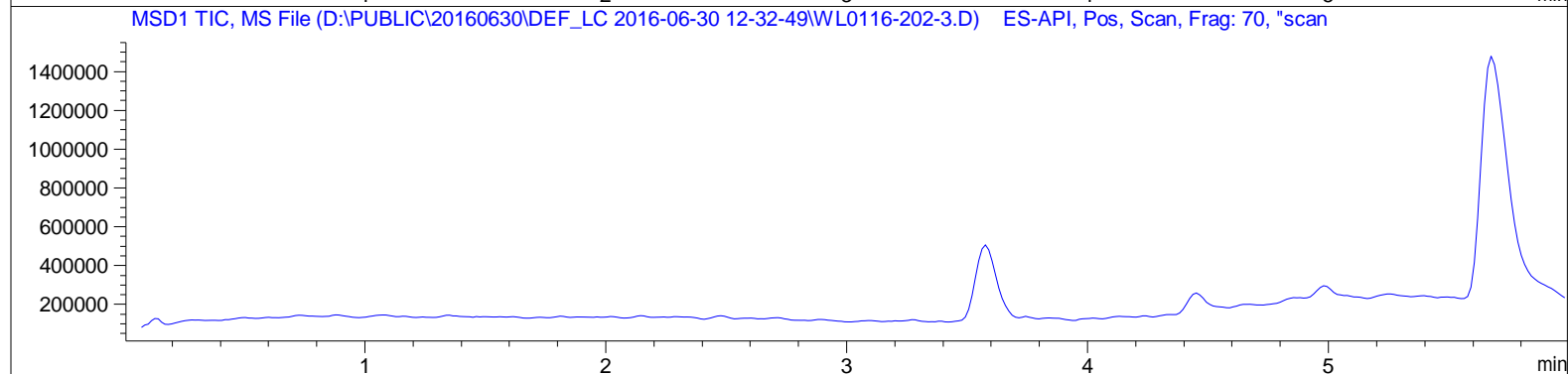
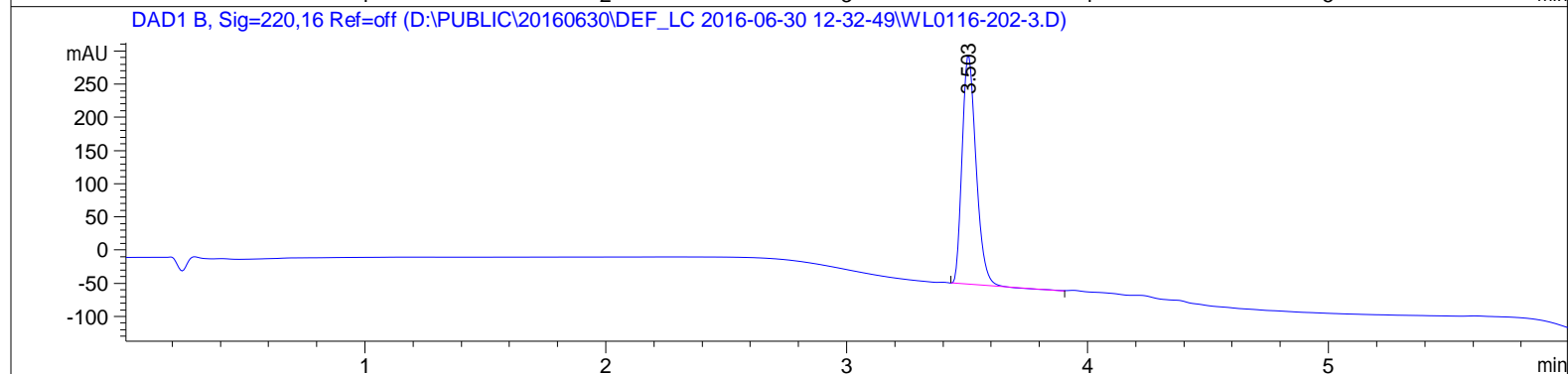
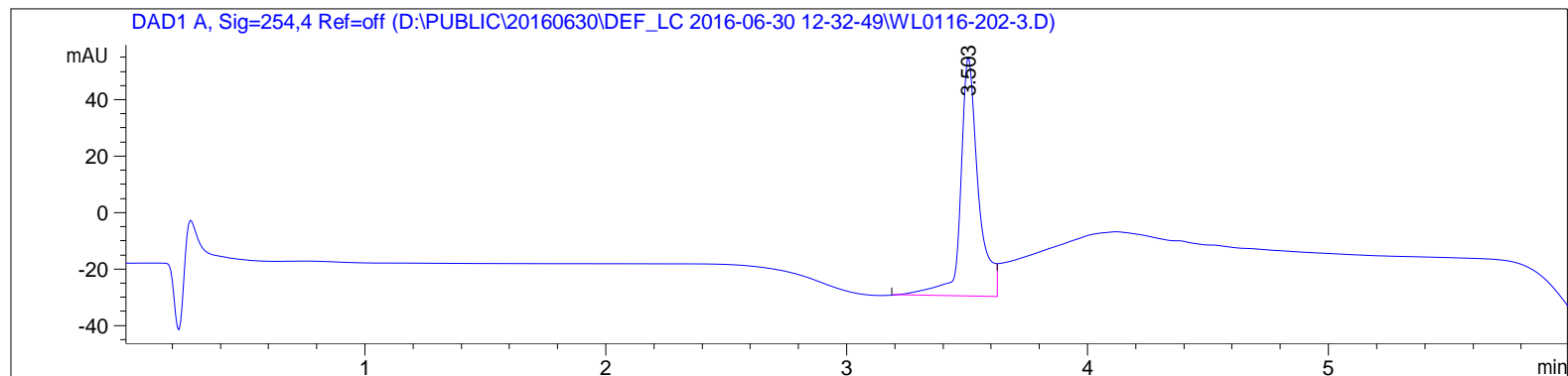


Sample Name: WL0116-202-3

=====

Acq. Operator	:		Seq. Line	:	10
Acq. Instrument	:	Instrument 1	Location	:	Vial 9
Injection Date	:	6/30/2016 1:40:35 PM	Inj	:	1
			Inj Volume	:	0 µl
Different Inj Volume from Sequence !			Actual Inj Volume	:	2 µl
Acq. Method	:	D:\Public\20160630\DEF_LC 2016-06-30 12-32-49\5-95 6MIN.M			
Last changed	:	6/9/2016 11:24:00 PM			
Analysis Method	:	D:\PUBLIC\20160627\DEF_LC 2016-06-28 15-20-03\WANGLE-2.D\DA.M (5-95 6MIN.M)			
Last changed	:	6/28/2016 5:00:34 PM			



=====
Area Percent Report
=====

Sorted By : Signal
Multiplier : 1.0000
Dilution : 1.0000
Use Multiplier & Dilution Factor with ISTDs

Signal 1: DAD1 A, Sig=254,4 Ref=off

Peak #	RetTime [min]	Type	Width [min]	Area [mAU*s]	Height [mAU]	Area %
1	3.503	BV	0.0762	437.37384	84.75329	100.0000

Totals : 437.37384 84.75329

Signal 2: DAD1 B, Sig=220,16 Ref=off

Peak #	RetTime [min]	Type	Width [min]	Area [mAU*s]	Height [mAU]	Area %
1	3.503	VV	0.0635	1410.21423	346.26895	100.0000

Totals : 1410.21423 346.26895

Signal 3: MSD1 TIC, MS File

Signal 4: MSD2 TIC, MS File

=====
*** End of Report ***

MS Spectrum

"MSD1 SPC, time=3.575 of D:\PUBLIC\20160630\DEF_LC 2016-06-30 12-32-49\WL0116-202-3.D ES-API, Pos, Scan, Frag: 70, "

